

## The Hospital World.

### CENTRAL LONDON SICK ASYLUM, HENDON.

The Central London Sick Asylum at Hendon, provided, in addition to the asylum in Cleveland Street, for the care and treatment of the sick poor in some of the most congested areas in London, is a fine building set in the midst of country surroundings, and swept by the pure and health-giving air which blows over Dollis Hill and Hendon. Indeed, once the patients are admitted to the Hendon Infirmary they seem to take on a new lease of life, and to live on in a manner which speaks volumes for the care and attention which they receive.

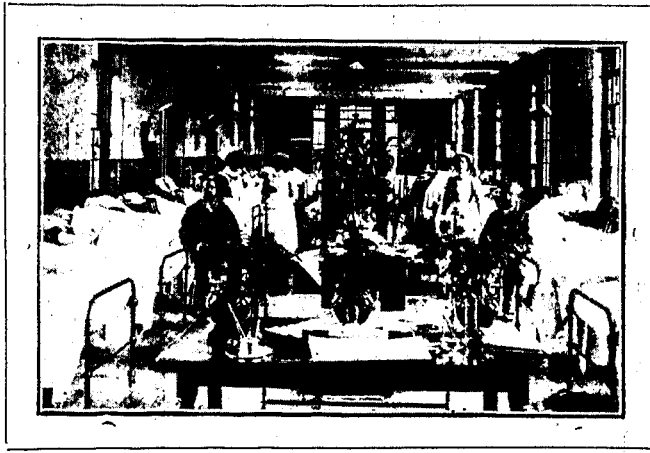
In designing and equipping the building every care has been taken to bring it into line with modern hospital requirements. Indeed,

room, and kitchen, besides a small ward in which cases unsuitable for the general wards are nursed. The later wards, which are arranged on the pavilion plan, so that the maximum of fresh air, light, and sunshine are secured, are bright and cheery places for sick people, and they open on to verandahs or balconies on which

as many of the patients as possible lie or sit out during the day-time. Each ward has two baths, a more liberal supply than that provided in the wards of general hospitals of similar size.

The Nurses' Home is a separate building, connected with the Infirmary by a

covered way, by which means the nurses going to and fro get the benefit of the fresh breezes. The Home is designed with commendable consideration for the comfort of the nurses, who



A MALE WARD.



NURSES PLAYING TENNIS AND CROQUET.

many Metropolitan hospitals have not the conveniences which are possible in an institution further from the centre of London, where land is of fabulous value. Thus, annexed to each ward are its own spacious linen-room, store-

have a spacious and comfortably furnished sitting-room, as well as a smaller room in which those who wish to write or study can be assured of quiet. On the ground floor also, at the end of the polished corridor, is a sick-room,

[previous page](#)

[next page](#)